

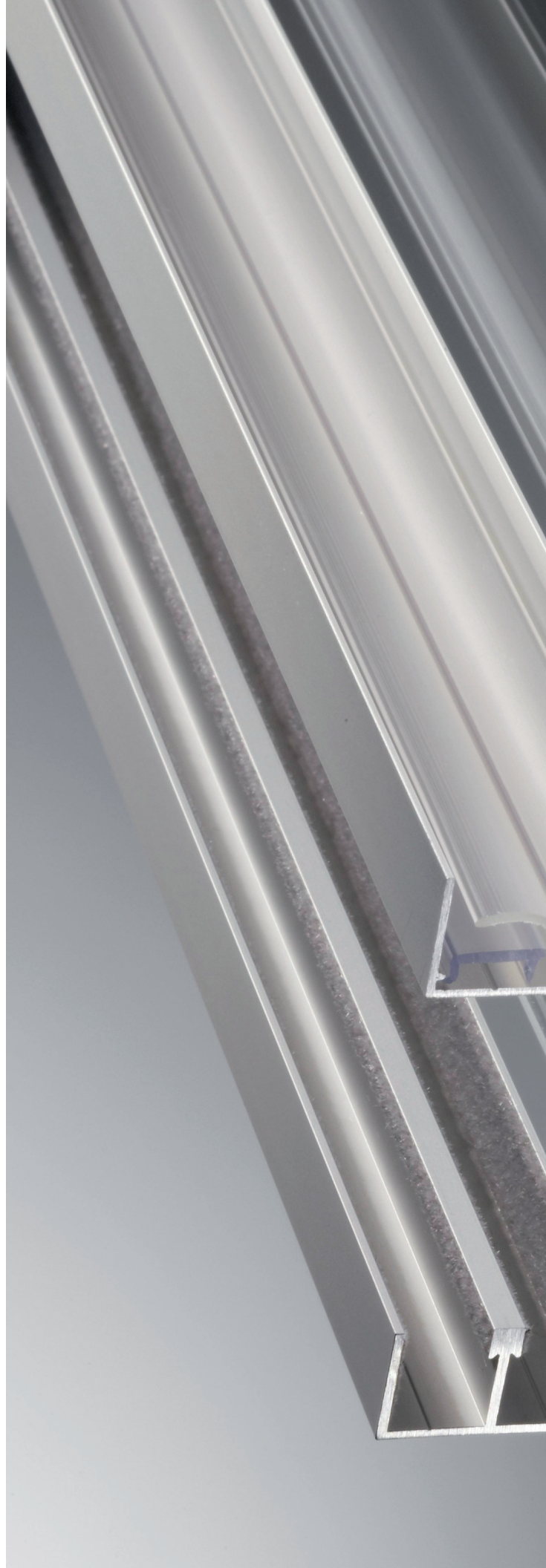
Robustus Fittings

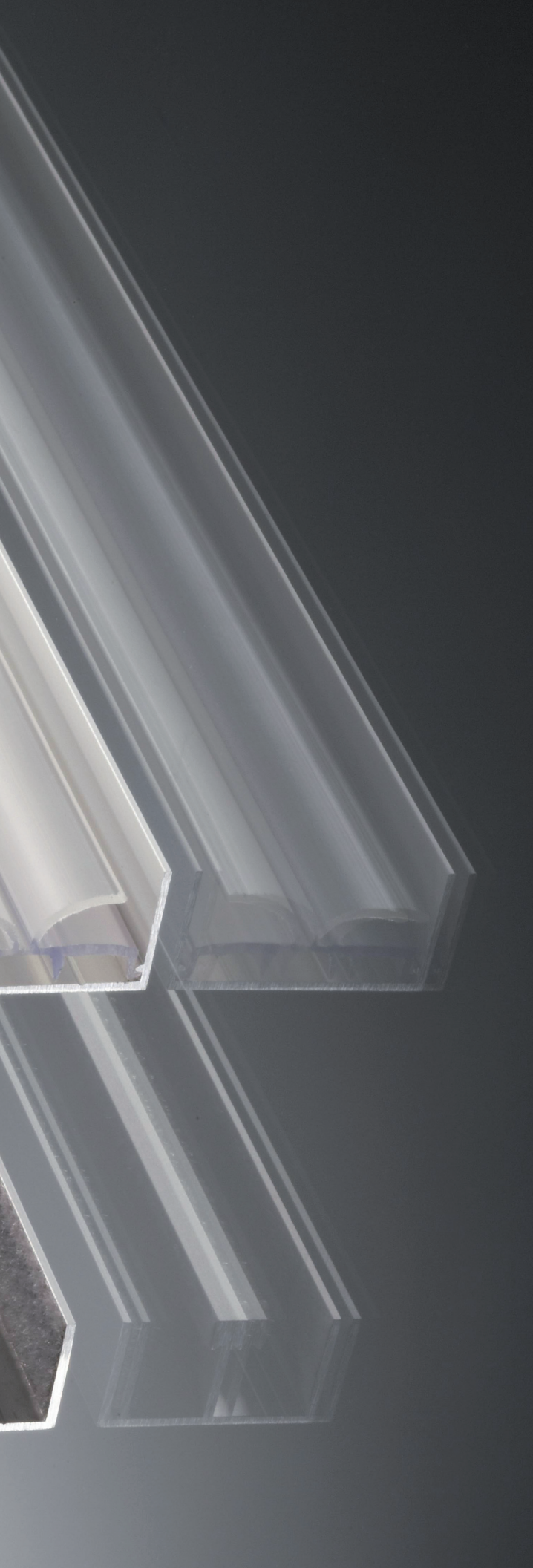
Transaction · Display · Trophy · Showcase

BUILD ELEGANT FURNITURE

Due to its transparency and luminosity, glass has always been a favored material when building furniture. This trend has increased in recent years - whether in building construction or for interior design and decoration. The combination of glass with wood is also increasing in popularity.

Our portfolio of products and accessories are designed to help you achieve your design goals. These products are compatible with both glass/glass projects and glass/wood, and all fittings are suitable for use with UV bonding.





ROBUSTUS FITTINGS

Fittings for sliding glass doors for furniture	4
Fittings for sliding showcase doors	6

FITTINGS & HARDWARE

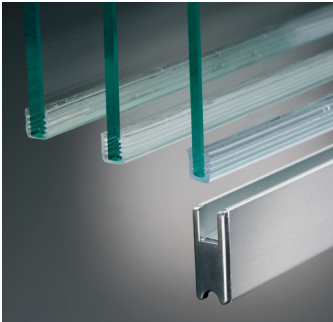
Dual top guide channel	8
Glazing rail	8
Dual bottom running track	8
Running gear	9
Glass gasketing	9
Damping and antitheft device	9
Cover cap with notch	9
Finger pull handle	9
Security lock housing to glazing rail	10
Lock core	10
Lock core removal key	10
Vertical jamb profile	10
Dust protection and damping insert to vertical frame profile	11
Mounting tool for running gear	11



FITTINGS FOR SLIDING GLASS DOORS FOR FURNITURE

Premium fittings designed for universal applications of $\frac{3}{8}$ " - $\frac{1}{2}$ " tempered glass with high quality fittings including superior running gear technology, simplified glazing process, locking solutions with long-lasting, easy, and quiet functioning of your most demanding requirements.

Modular System



Glass thickness

1/4" – 1/2"

The modular principle is applied consistently throughout the entire product range.

Long-lasting Function



Running gear technology

The running gear assembly in a single-unit spring steel housing offers precise centering, self-alignment in the glazing rail for extremely efficient and quiet operation.

High Level Security



Adjustable dampener / anti-theft device

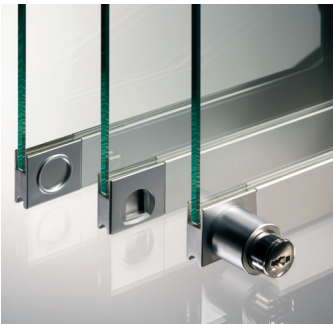
Stop and retain to prevent removal of panels in closed position.

Simple Assembly



Mounting tool

Installation of running gear is instant and clean without the need for fasteners.



Variations of locking

Strike plates and finger pull handles have been coordinated to work with glazing profiles and other components for a complete system.



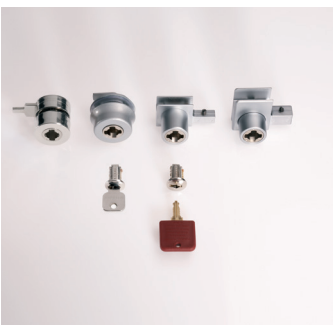
Running gear design

Long-lasting, easy, and quiet operation with metal housing and nylon wheels.



Security

The patented locking feature prevents the doors from being either pushed or pulled apart.



Locking system types

The interchangeable core (IC) can be universally fitted to all lock bodies.



Non-wearing top guide channel

The high quality flocking applied by machine to the top guide channels guarantees a high degree of wear resistance and quiet running action.

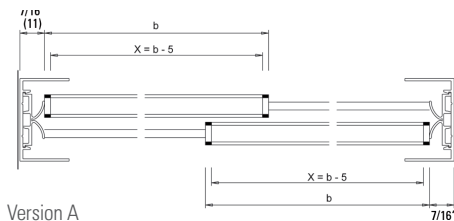
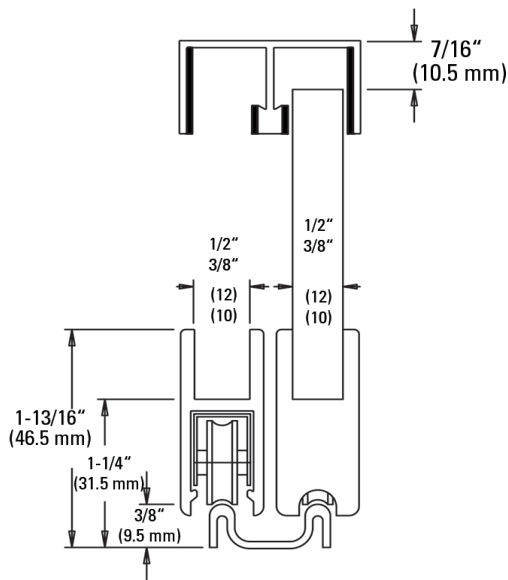


FITTINGS FOR SLIDING SHOWCASE DOORS

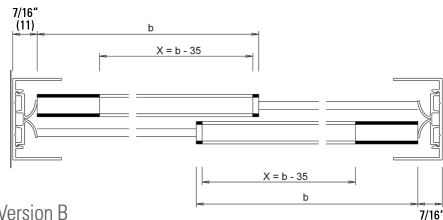
Robustus is a fittings system for glass thicknesses from $\frac{3}{8}$ " - $\frac{1}{2}$ ". It can be used in a range between 154 lbs (2 rollers) and 308 lbs (4 rollers) and is therefore also suitable for tempered safety glass.

Robustus aluminum profiles are available in clear anodized.

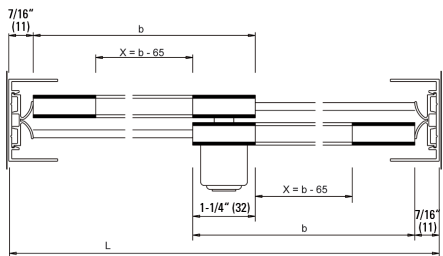
Robustus with dual tracks



Version A



Version B



Version C

Calculations for glass and glazing profiles

DLO-W = Day light opening-Width
 DLO-H = Day light opening-Height
 GRL = Glazing Rail Length
 Overlay* = 1 1/4" (32 mm)

Note: Finished jamb to finished jamb
 Note: Finished floor to bottom of top guide channel

Note: determine the total amount of overlay
 (total number of sliding panels - 1)
 Ex: 2 doors - 1 = 1 overlay.
 Total amount of overlay = 1 1/4" * 1 = 1 1/4".

Version A: no vertical jamb extrusions, with press-in end caps

Glass height = DLO-H - 1 5/8" (42 mm)
 Glass width = DLO-W + amount of overlay (see above*) / total number of sliding panels.
 Ex: 78" + 1 1/4" = 79 1/4" / 2 = 39 5/8"
 GRL = Door width - 3/16" (5 mm)
 Ex: 39 5/8" - 3/16" = 39 7/16" (door width)

Version B: no vertical jamb extrusions, including flush pulls on end

Glass height = DLO-H - 1 5/8" (42 mm)
 Glass width = DLO-W + amount of overlay (see above*) / total number of sliding panels
 Ex: 78" + 1 1/4" = 79 1/4" / 2 = 39 5/8"
 GRL = Door width - 1 3/8" (35 mm)
 Ex: 39 5/8" - 1 3/8" = 38 1/4" (door width)

Version C: no vertical jamb extrusions, including flush pulls on end + lock

Glass height = DLO-H - 1 5/8" (42 mm)
 Glass width = DLO-W + amount of overlay (see above*) / total number of sliding panels
 Ex: 78" + 1 1/4" = 79 1/4" / 2 = 39 5/8" (door width)
 GRL = Door width - 2 9/16" (65 mm)
 Ex: 39 5/8" - 2 9/16" = 37 1/16"

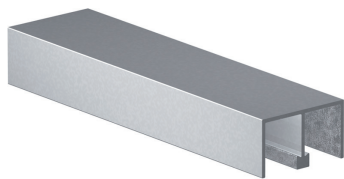
Version D: no vertical jamb extrusions, including lock, no flush pulls

Glass height = DLO-H - 1 5/8" (42 mm)
 Glass width = DLO-W + amount of overlay (see above*) / total number of sliding panels
 Ex: 78" + 1 1/4" = 79 1/4" / 2 = 39 5/8"
 GRL = Door width - 1 3/8" (35 mm)
 Ex: 39 5/8" - 1 3/8" = 38 1/4" (door width)

Note: If using vertical jamb extrusions, there is an additional deduct to your opening of 7/8" (22 mm) prior to calculating Glass Width and GRL.

Fittings & Hardware

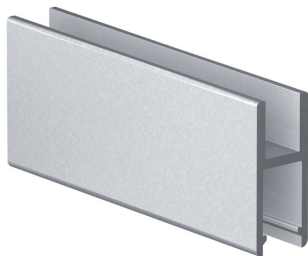
Dual Top Guide Channel



- Version flocked
- Protected by film
- Material: aluminum - felt lined
- Dims: 1 7/16" W x 13/16" H (36 x 20 mm)
- Packaging: 1 pc

LENGTH	FINISH	ITEM
196 7/8" (5000 mm)	Clear anodized	BO 6HAX100M

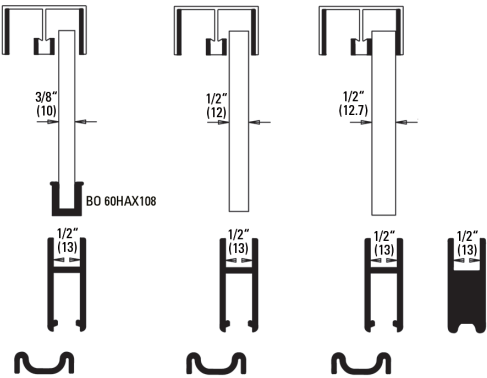
Glazing Rail 3/8" - 1/2" (10 mm - 12.7 mm)



- Version supplied with protective film
- Length 16'-4 7/8" (5000 mm)
- Material: aluminum
- Packaging: 1 pc

LENGTH	FINISH	ITEM
196 7/8" (5000 mm)	Clear anodized	BO 6HAX101M
98 7/16" (2500 mm)	Clear anodized	BO 6HAZ101M

Note: for 1/2" (12.7 mm) glass silicone will be required.
Note: for 1/2" glass (monolithic and laminated) applications.



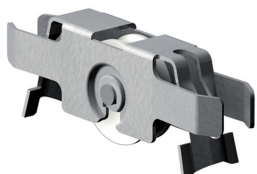
Dual Bottom Running Track



- Material: aluminum
- Dims: 15/16" W x 3/8" H (24 x 9.5 mm)
- Applied with double-sided adhesive tape (supplied)
- Packaging: 1 pc

LENGTH	FINISH	ITEM
196 7/8" (5000 mm)	Clear anodized	BO 6HAX102M

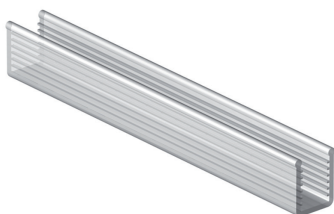
Running Gear



- Galv. steel frame with ball-bearing roller, nylon covered wheel
- Max. load: 2 running gear = 154 lbs (70 kg) - 4 wheels = 308 lbs (140 kg) / panel
- Mounting tool = BO60HAX55
- Packaging: 1 pc

		ITEM
		BO 60HAX103

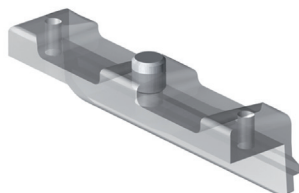
Glass Gasketing 3/8" (10 mm)



- For 3/8" (10 mm) glass in glazing rail BO6HAX101M with 1/2" (13 mm) groove width
- Material: plastic
- Note: for 1/2" (12.76 mm) glass, silicone will be required
- Packaging: 1 pc

LENGTH	FINISH	ITEM
39 3/8" (1000 mm)	Transparent	BO 60HAX108

Damping and Antitheft Device



- Version for double guide profile
- Material: plastic
- Packaging: 1 pc

GLASS THICKNESS	FINISH	ITEM
3/8" - 1/2" (8 - 12.7 mm)	Transparent	BO 60HAX110

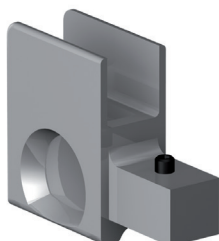
Cover Cap with Notch



- Material: plastic
- Packaging: 1 pc

GLASS THICKNESS	FINISH	ITEM
3/8" - 1/2" (8 - 12.76 mm)	Silver aluminum	BO 60HAX104

Finger Pull Handle

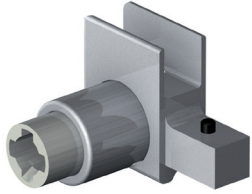


- Version can be used on left or right side
- Material: zinc
- Packaging: 1 pc

GLASS THICKNESS	FINISH	ITEM
3/8" - 1/2" (10 - 12.76 mm)	Aluminum	BO 60HAX105

Fittings & Hardware

Security Lock Housing to Glazing Rail



- Version can be used on left or right side
- Material: zinc
- Packaging: 1 pc

- Note: BO60HAX51S is required for disassembling or exchanging the lock core

GLASS THICKNESS	FINISH	ITEM
3/8" - 1/2" (10 - 12.76 mm)	Aluminum	BO 60HAX116

Lock Core



- With 2 keys
- Version interchangeable

- Material: plastic
- Packaging: 1 pc

FINISH	ITEM
Nickel plated	BO 60HAX121

Lock Core Removal Key



- Material: zinc

- Packaging: 1 pc

FINISH	ITEM
Nickel plated	BO 60HAX51S

Vertical Jamb Profile



- Version supplied with protective film
- Glass thickness 3/8" - 1/2" (10 - 12.76 mm)
- Material: aluminum

- Note: for BO60HAX38
- Note: available in 8' - 2 7/16" (2500 mm) lengths
- Packaging: 1 pc

LENGTH	FINISH	ITEM
16' - 4 7/8" (5000 mm)	Natural anodized	BO 60HAX109

Dust Protection and Damping Insert to Vertical Frame Profile



- For frame profile B060HAX109
- Material: plastic
- Packaging: 1 pc

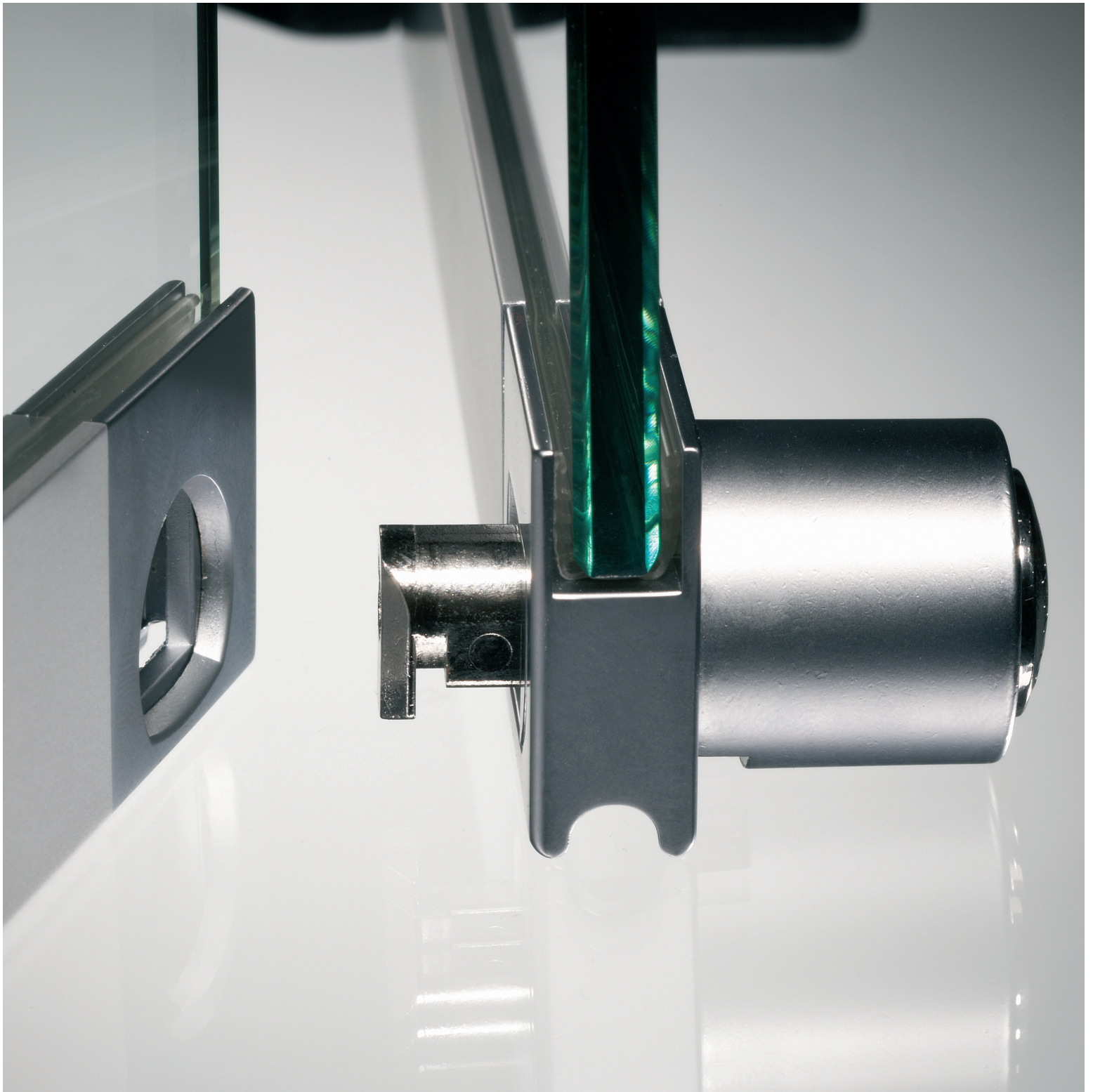
LENGTH	FINISH	ITEM
16' - 4 7/8" (5000 mm)	Transparent	BO 60HAX38

Mounting Tool for Running Gear



- Mounting tool for roller assembly
- Material: stainless steel with plastic handle
- Packaging: 1 pc

ITEM
BO 60HAX55



Bohle | Portals

10924 Granite Street, Suite 200, Charlotte, NC 28273
925 Lydia Ave, Kansas City, MO 64106

T +1 888 838 6006

info@bohle-america.com · email@portalshardware.com
www.bohle.com · www.portalshardware.com

 Bohle | portals